

ISOLATE + MITIGATE

LITHIUM BATTERY RISKS
DURING STORAGE & TRANSPORT



DynaLoc[®]LTC
Lithium Transport Container



U.S. CHEMICAL
storage[®] Justrite Safety Group

1806 River Street - Hwy 268W
www.uschemicalstorage.com

Wilkesboro, NC 28697
800-233-1480

WOOD LINING AND PROPRIETARY COATING KEEPS THE INTERIOR INSULATED AND TEMPERATURES LOW. AND CONTAINS EXPLOSIONS AND VIOLENT KINETIC ENERGY.

SIDE-BY-SIDE TESTING PROVES THE DURABILITY AND SAFETY OF THE DYNALOC LTC.



LTC 201709



For laptops & e-mobility
Divots for easy stacking
Exterior dimensions:
L 20" x W 17" x H 9"
Max capacity: 3.0 gal

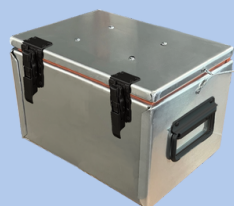
CART for LTC 201709

Wheeled cart for
LTC201709



Perfect for collection
from various workstations
Exterior dimensions:
L 51" x W 24" x H 39"

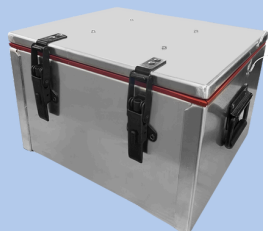
LTC 510



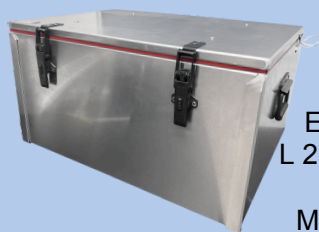
Exterior dimensions:
L 14" x W 10.5" x H 9"
Max capacity: 3.0 gal

LTC 511

Exterior dimensions:
L 16" x W 14" x H 10.25"
Max capacity: 5.6 gal



LTC 521



Exterior dimensions:
L 25.5" x W 18" x H 13.5"
Max capacity: 18.9 gal

Custom colors or decals available on all models

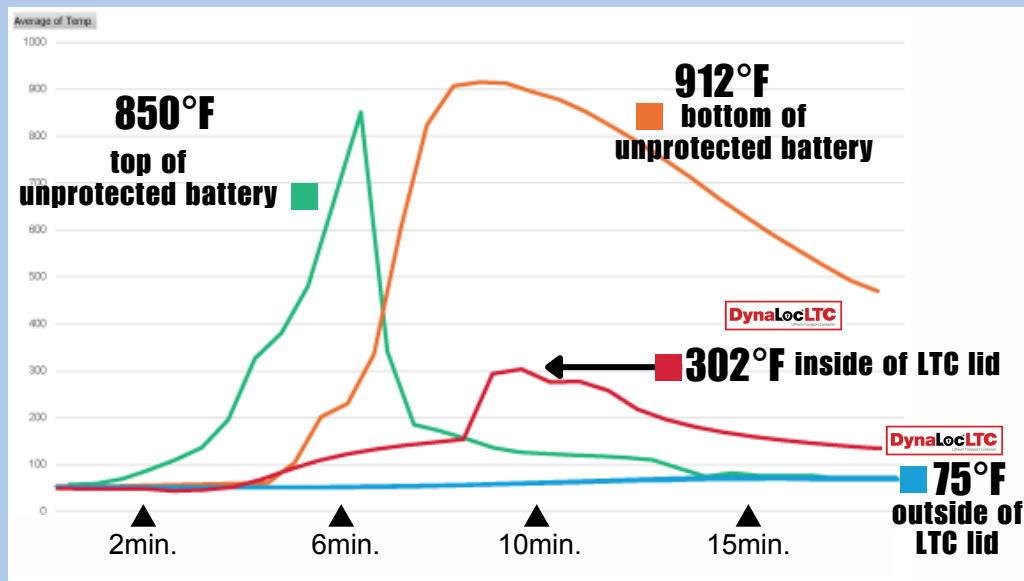
WATCH THE TEST



THE RESULTS TELL IT ALL

WOOD LINING AND PROPRIETARY COATING KEEP THE INTERIOR INSULATED AND TEMPERATURES LOW. THE STRONG CONSTRUCTION CONTAINS EXPLOSIONS AND VIOLENT KINETIC ENERGY.

SIDE-BY-SIDE TESTING PROVES THE DURABILITY AND SAFETY OF THE DYNALOC LTC.



Interior ballistic protection

basis of design is ATF Daybox standards. Offers non-sparking protection of exposed battery contacts. Prevents molten plastic and metals from igniting surroundings.

2-hour fire-rated interior coating

reduces exterior box temperatures to below 100°F* during a runaway event, preventing ambient ignition of adjacent materials or additional thermal runaway.

Gas filter

reduces gas emissions, releases pressure, and directs smoke

Welded aluminum construction

for strength with reduced weight.

*Temperatures will vary based on number of batteries contained. Representative of 9 cells in full runaway.

