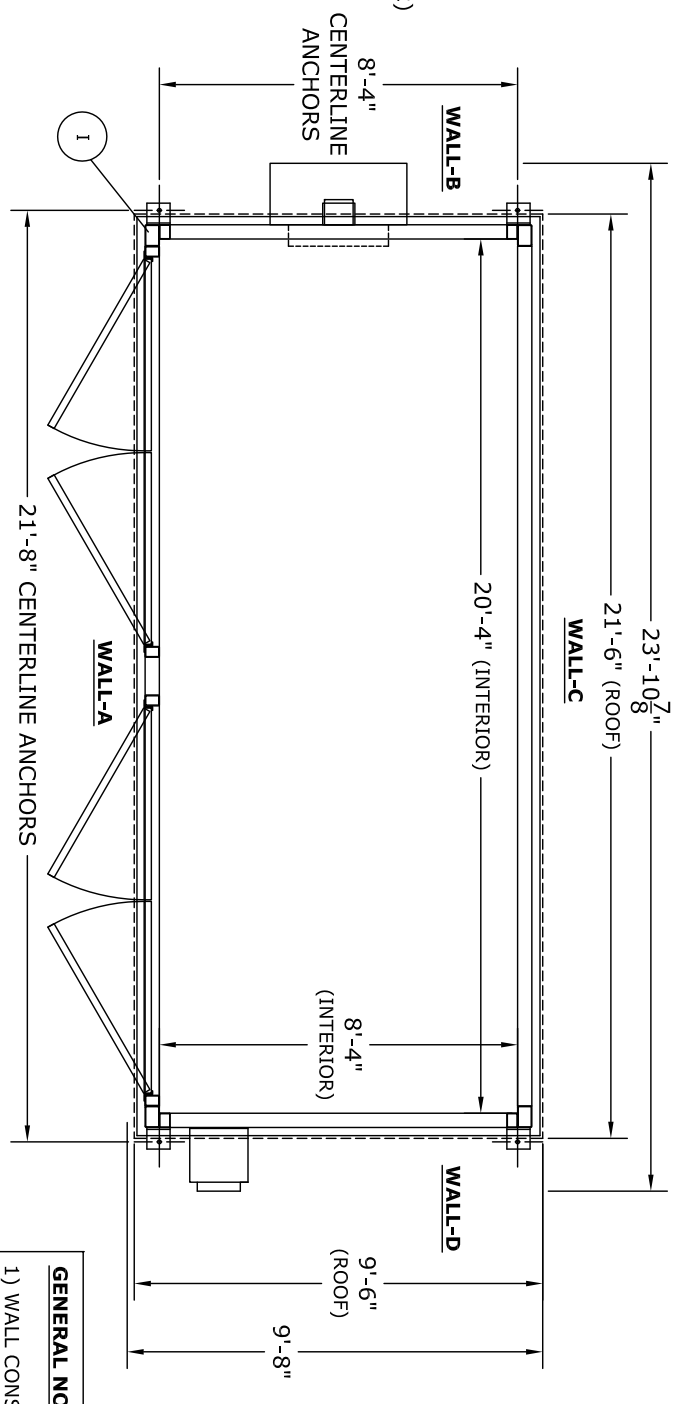


LEGEND

- DOT - DEPARTMENT OF TRANSPORTATION FLIP CHART PLACARD
- NF - NATIONAL FIRE PROTECTION ASSOCIATION 704 SIGN
- HDA - HOLD DOWN ANGLE (4)
- FP - FORKLIFT POCKETS
- SGC - STATIC GROUND CONNECTOR
- S - SUMP (627 GAL CAPACITY)
- BC - BUILDING COLOR: BLEACHED BONE
- NV - NATURAL VENTILATION WITH RAIN LOUVER (1)
- D - 108"W x 80"H DOUBLE LEAF DOOR, NON-FIRE RATED 3 POINT LOCK (2)
- I - INSULATION (R12) CEILING CAVITY, (R12) WALL CAVITY (R12) IN THE FLOOR
- LC - LOAD CENTER 240V/1Ø NEMA 3R, GENERAL PURPOSE (1)
- AC - AIR CONDITIONER, GENERAL PURPOSE (1)
- MV - MECHANICAL VENT w/ 3 HR FIRE DAMPER, EXPLOSION PROOF C1-D1, GROUP C & D ELECTRICAL (1)
- SW - EXHAUST FAN SWITCH, GENERAL PURPOSE (1)



ESTIMATED SHIPPING DIMENSIONS:
 LENGTH = 24'-1"
 DEPTH = 9'-10"
 HEIGHT = 9'-6"

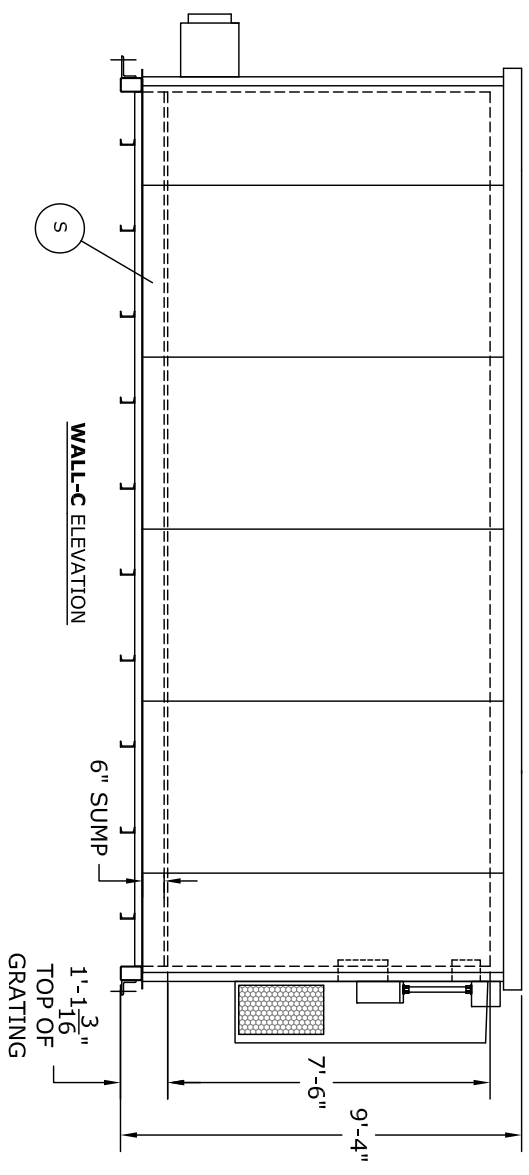
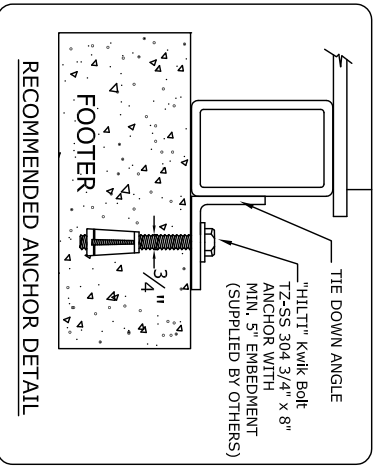
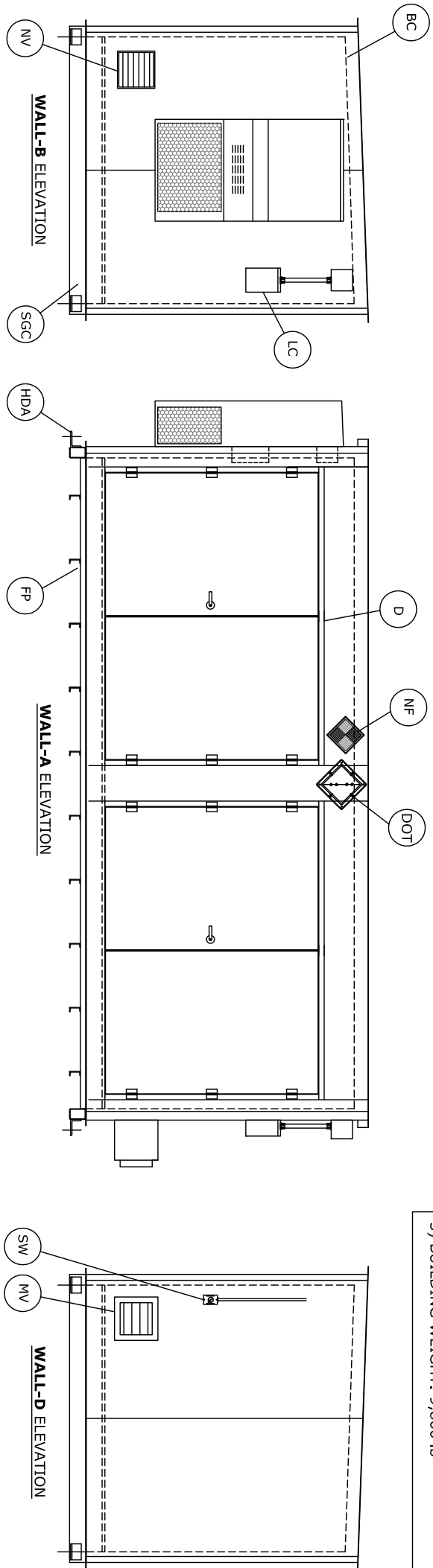
GENERAL NOTES:
 1) WALL CONSTRUCTION: NON-COMBUSTIBLE
 2) ROOF CONSTRUCTION: NON-COMBUSTIBLE
 3) BUILDING WEIGHT: 9,800 lb

SUPPLY VOLTAGE
 120/240V/1Ø/60hz

ALL DIMENSIONS SHOWN ON THIS PRINT ARE FOR YOUR REFERENCE. TOLERANCES ARE ±1" UNLESS OTHERWISE NOTED.

DATE: _____
 DRAWN BY: _____

**NON FIRE RATED BUILDING
 MODEL NO. CL2109**



LEGAL NOTE
 THIS DRAWING IS THE PROPERTY OF U.S. CHEMICAL STORAGE, LLC. ANY DUPLICATION OF THIS DRAWING IN WHOLE OR IN PART IS STRICTLY FORBIDDEN. ANYONE DOING SO WILL BE PROSECUTED UNDER THE FULL EXTENT OF THE LAW.



MANUFACTURING FACILITY
 1806 River Street, Hwy. 268 W.
 Wilkesboro, NC 28697

uscchemicalstorage.com 1-800-233-1480