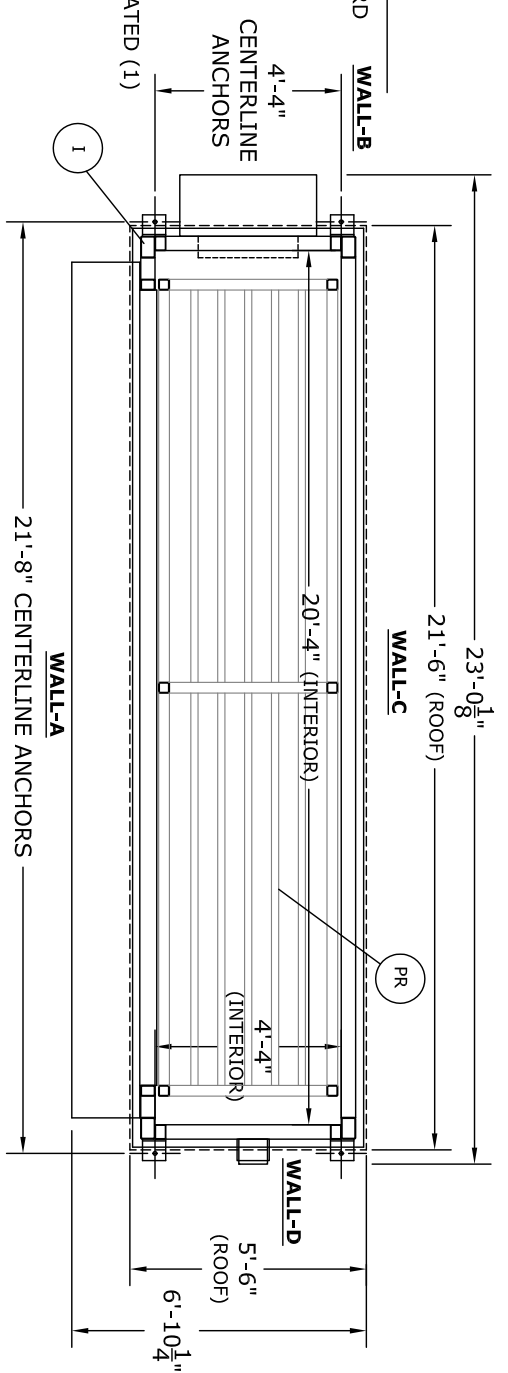


REVISIONS		
CHANGES BY	REV	DATE

LEGEND

- DOT - DEPARTMENT OF TRANSPORTATION FLIP CHART PLACARD
- NF - NATIONAL FIRE PROTECTION ASSOCIATION 704 SIGN
- HDA - HOLD DOWN ANGLE (4)
- FP - FORKLIFT POCKETS
- SGC - STATIC GROUND CONNECTOR
- S - SUMP (326 GAL CAPACITY)
- BC - BUILDING COLOR: BLEACHED BONE
- NV - NATURAL VENTILATION WITH RAIN LOUVRE (1)
- RD - 18.6"W x 9.6"H ROLL-UP DOOR, NON-FIRE RATED, INSULATED (1)
- PR - PALLET RACK, 4 PALLETS ABOVE & 4 PALLETS BELOW
- I - INSULATION (R12) CEILING CAVITY, (R12) WALL CAVITY (R12) IN THE FLOOR
- LC - LOAD CENTER 240V/1Ø NEMA 3R, GENERAL PURPOSE (1)
- AC - AIR CONDITIONER, GENERAL PURPOSE (1)



ESTIMATED SHIPPING DIMENSIONS:
 LENGTH = 23'-2"
 DEPTH = 7'-0"
 HEIGHT = 12'-5"

- GENERAL NOTES:**
- 1) WALL CONSTRUCTION: NON-COMBUSTIBLE
 - 2) ROOF CONSTRUCTION: NON-COMBUSTIBLE
 - 3) BUILDING WEIGHT: 7,800 lb

GENERAL NOTES:

- 1- ALL MATERIAL AND WORKMANSHIP SHALL CONFORM WITH THE REQUIREMENTS OF THE LATEST REVISION OF THE UBC, IBC AND STATE BUILDING CODES. DESIGN ACCORDING TO ASCE, ASD, AND WITH ANSII ASCE 7-10.
- 2- NO LOADS OTHER THAN THOSE GIVEN UNDER "DESIGN DATA" BELOW SHALL BE IMPOSED ON THE "STRUCTURE."
- STRUCTURAL DATA (MATERIALS)
- STRUCTURAL QUALITY ASTM SPECIFICATION, A36 ERTOS WELDING WIRE.
- DESIGN DATA IN ACCORDANCE WITH ANSII/ASCE 7-10:

MINIMUM ROOF LIVE LOAD (PSF) = 40
 P_g: GROUND SNOW LOAD (PSF) = 50
 V : WIND VELOCITY (MPH V ult) = 120
 SEISMIC DESIGN CATEGORY : C

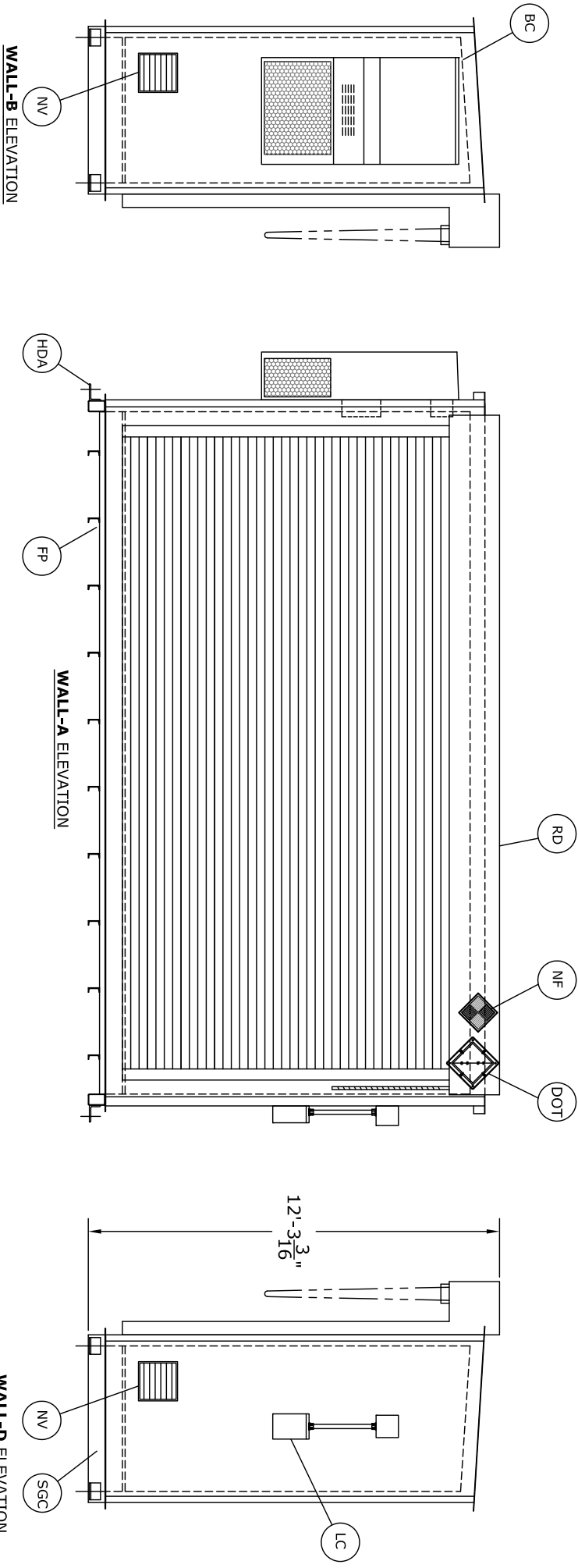
FINAL FOUNDATION DESIGN TO BE SUPPLIED BY OTHERS

SUPPLY VOLTAGE
 120/240V/1Ø/60hz

ALL DIMENSIONS SHOWN ON THIS PRINT ARE FOR YOUR REFERENCE. TOLERANCES ARE ±1" UNLESS OTHERWISE NOTED.

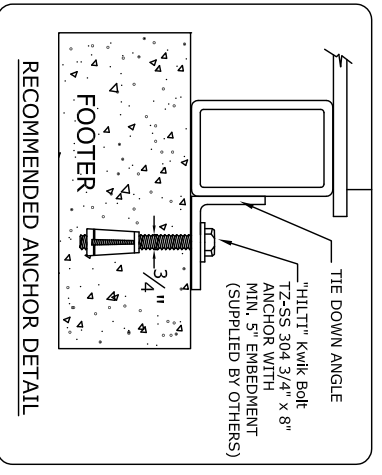
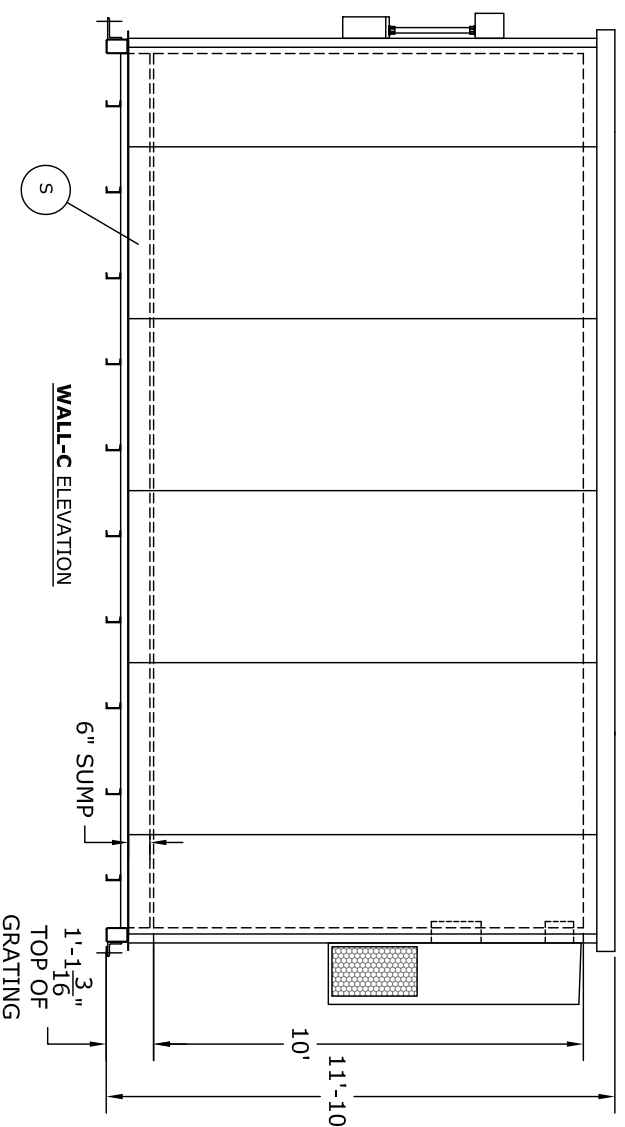
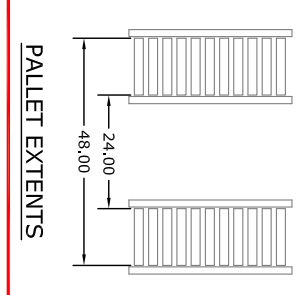
DATE:
 DRAWN BY:

**NON FIRE RATED BUILDING
 MODEL NO. CL2105**



PALLET INFORMATION FOR 18'-6" DOOR
 SUGGESTED PALLET WIDTH: 48" - 30"
 SUGGESTED PALLET HEIGHT: 48"
 MAXIMUM PALLET DEPTH: 48"
 MAXIMUM PALLET WEIGHT: 2,500 lbs

CLEARANCES WITH SUGGESTED PALLET DIMENSIONS:
 6" HEIGHT, 3" EACH SIDE



LEGAL NOTE

THIS DRAWING IS THE PROPERTY OF U.S. CHEMICAL STORAGE, LLC. ANY DUPLICATION OF THIS DRAWING IN WHOLE OR IN PART IS STRICTLY FORBIDDEN. ANYONE DOING SO WHILE OR IN PART IS UNDER THE FULL EXTENT OF THE LAW.



MANUFACTURING FACILITY
 1806 River Street, Hwy. 268 W.
 Wilkesboro, NC 28697