

REVISIONS				
CHANGES BY	REV	DESCRIPTION	DATE	APPROVED

GENERAL NOTES:
 1- ALL MATERIAL AND WORKMANSHIP SHALL CONFORM WITH THE REQUIREMENTS OF THE LATEST REVISION OF THE UBC 1997. DESIGN ACCORDING TO AISC, ASD, AND WITH ANSI/ ASCE 7-95.
 2- NO LOADS OTHER THAN THOSE GIVEN UNDER "DESIGN DATA" BELOW SHALL BE IMPOSED ON THE "STRUCTURE." DESIGN DATA (MATERIALS)
 STRUCTURAL QUALITY ASTM SPECIFICATION, A36 ER70S WELDING WIRE.
 DESIGN DATA IN ACCORDANCE WITH ANSI/ ASCE 7-95:
 MINIMUM ROOF LIVE LOAD (PSF) = 40
 Pg: GROUND SNOW LOAD (PSF) = 50
 V : WIND VELOCITY (MPH) = 130
 SEISMIC ZONE = 4

FOUNDATION NOTES:
 THE FOUNDATION DRAWING IS A SUGGESTION ONLY. CHANGES MAY BE NECESSARY DUE TO LOCAL BUILDING REGULATIONS AND SITE CONDITIONS.
 1- THE PAD PERIMETER SHOULD BE AT LEAST 24" LARGER THAN THE BUILDING, BOTH IN LENGTH AND WIDTH.
 2- THE FOUNDATION SHOULD BE FORMED ON NATURAL UNDESTRUBED SOIL CAPABLE OF SUBSTAINING 1,500 PSF.
 3- GRANULAR BASED GRAVEL OR CRUSHED STONE SHOULD BE COMPACTED TO A DEPTH OF 4". THE SLAB SHOULD CONSIST OF 4" THICK 3,000 PSI CONCRETE.
 4- FINISH SURFACE SHOULD BE LEVEL AND THEN INSTALL 3/4" X 4" ANCHOR BOLTS INTO THE TIE DOWNS ATTACHED TO THE BUILDING CORNERS.

ALL DIMENSIONS SHOWN ON THIS PRINT ARE FOR YOUR REFERENCE. TOLERANCES ARE ±1" UNLESS OTHERWISE NOTED.

DATE: 8/11/08
 DRAWN BY: BL

CUSTOMER
 -
 -
 MODEL NO. FL3210
 QUOTE NO. -
 ORDER NO. -

APPROVAL PRINT
 THIS PRINT IS CONFIRMATION OF YOUR ORDER AND ILLUSTRATES THE APPROXIMATE LOCATION OF FACTORY INSTALLED OPTIONS. CUSTOMER APPROVAL IS REQUIRED BEFORE MANUFACTURING CAN BEGIN.
 ANY CHANGES MADE AFTER CUSTOMER APPROVAL MAY INCUR EXTRA CHARGES AND DELAY ESTIMATED DELIVERY.

SIGNATURE _____
 PLEASE PRINT NAME _____ DATE _____

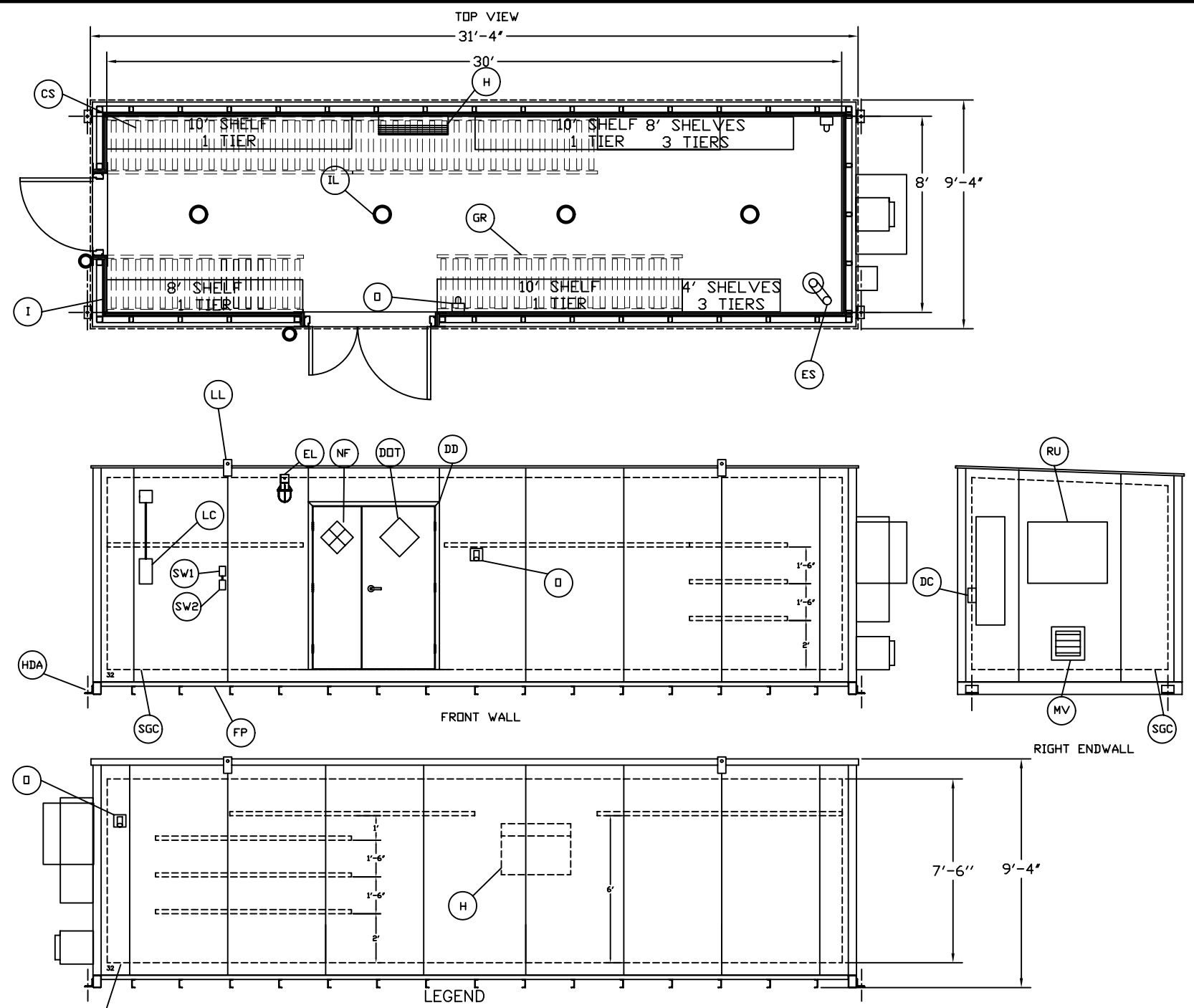
LEGAL NOTE
 THIS DRAWING IS THE PROPERTY OF U.S. CHEMICAL STORAGE, LLC. ANY DUPLICATION OF THIS DRAWING IN WHOLE OR IN PART IS STRICTLY FORBIDDEN. ANYONE DOING SO WILL BE PROSECUTED UNDER THE FULL EXTENT OF THE LAW.

Customer is responsible to check with appropriate agencies to determine if any third party or local approvals are necessary.

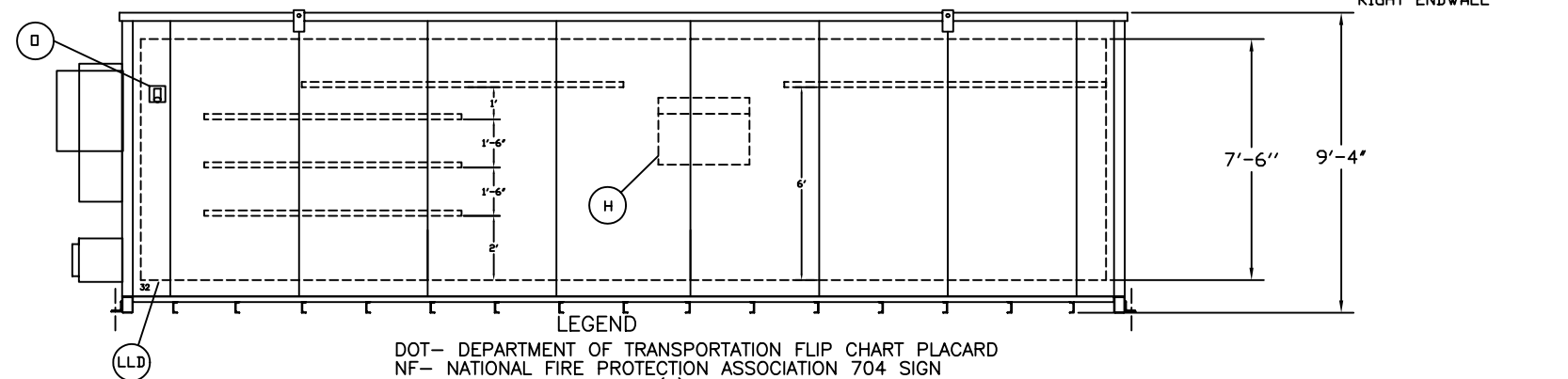
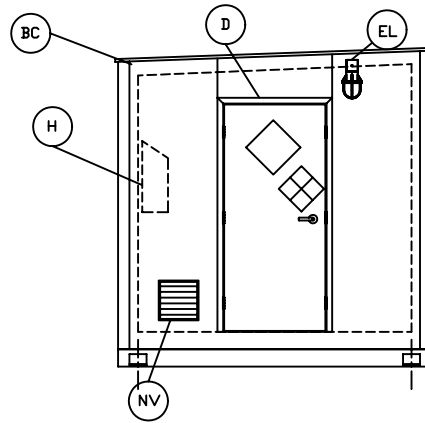
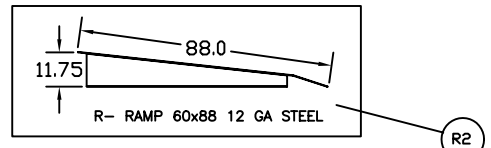
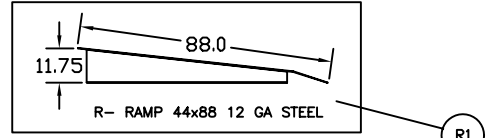
This order does not include tax, anchoring, arming of dry chemical fire suppression system, electrical/water connections or permits.

This order is subject to US Chemical Storage LLC's terms and conditions which are located in your building manual which can be downloaded from www.uschemicalstorage.com/support/index.html

Customer is responsible to determine the classification and set back of the storage building depending on the type and quantity of the chemicals being stored. Local Agency may require additional equipment to be added to this unit after their plan review process. Additional equipment is not included in the quotation.



- LEGEND**
- DOT- DEPARTMENT OF TRANSPORTATION FLIP CHART PLACARD
 - NF- NATIONAL FIRE PROTECTION ASSOCIATION 704 SIGN
 - HDA- HOLD DOWN ANGLE (4)
 - S- SUMP
 - FP- FORKLIFT POCKETS
 - SGC- STATIC GROUND CONNECTOR (2)
 - BC- BUILDING COLOR, WHITE
 - NV- NATURAL VENTILATION WITH RAIN LOUVRE
 - LL- LIFTING LUG (4)
 - R1- RAMP 44" x 88"
 - R2- RAMP 60" x 88"
 - EL- (EXPLOSION PROOF) EXTERIOR LIGHTING (QTY 2)
 - D- SINGLE DOOR 36" W 3 HR FIRE-RATED (QTY 1)
 - DD- DOUBLE DOOR 60" W 3 HR FIRE-RATED (QTY 1)
 - DC- DRY CHEMICAL FIRE SUPPRESSION SYSTEM 45 LB TANK
 - IL- (EXPLOSION PROOF) INTERIOR LIGHTING (QTY 4)
 - MV- (EXPLOSION PROOF) MECHANICAL VENT
 - LLD- LIQUID LEVEL DETECTOR
 - LC- LOAD CENTER 208V/3 PHASE
 - RU- (EXPLOSION PROOF) FREEZER UNIT 22,000 BTU (QTY 1)
 - H- (EXPLOSION PROOF) CONVECTION HEATER 12,286 BTU/HR (QTY 1)
 - I- INSULATION (R19) WALLS AND CEILING
 - CS- CONTAINMENT SHELVING 76 LINEAR FEET
 - SW1- (NON-EXPLOSION PROOF) LIGHT SWITCH
 - SW2- (NON-EXPLOSION PROOF) FAN SWITCH
 - ES- EYEWASH STATION/ SHOWER COMBINATION
 - O- (EXPLOSION PROOF) OUTLETS (2)
 - GR- GRAVITY ROLLERS



U.S. CHEMICAL STORAGE®
 CORPORATE OFFICE
 355 Industrial Park Drive
 Boone, NC 28607
 PHONE: 1.800.233.1480
 MANUFACTURING FACILITY
 1806 River Road, Hwy 268 W.
 Wilkesboro, NC 28697
 PHONE: 1.888.583.9823
 FAX: 1.336.838.0045

