



# Bulk Military POL Storage Model # CL3824

REVISIONS				
CHANGES BY	REV	DESCRIPTION	DATE	APPROVED

**STORAGE/DISPENSING  
OF CLASS 1A AND  
DISPENSING OF CLASS  
1B FLAMMABLE  
LIQUIDS PROHIBITED.**

Installation & Crane Service by  
**US Chemical Storage**

**SUPPLY VOLTAGE  
208V/1/60/100A**

GENERAL NOTES:  
1- ALL MATERIAL AND WORKMANSHIP SHALL CONFORM WITH THE REQUIREMENTS OF THE LATEST REVISION OF THE UBC 1997. DESIGN ACCORDING TO AISC, ASD, AND WITH ANSI/ASCE 7-95.  
2- NO LOADS OTHER THAN THOSE GIVEN UNDER "DESIGN DATA" BELOW SHALL BE IMPOSED ON THE "STRUCTURE."  
DESIGN DATA (MATERIALS)  
STRUCTURAL QUALITY ASTM SPECIFICATION, A36 ER70S WELDING WIRE.  
DESIGN DATA IN ACCORDANCE WITH ANSI/ASCE 7-95:

MINIMUM ROOF LIVE LOAD (PSF) = 40  
Pg: GROUND SNOW LOAD (PSF) = 50  
V: WIND VELOCITY (MPH) = 130  
SEISMIC ZONE = 4

FOUNDATION NOTES:  
THE FOUNDATION DRAWING IS A SUGGESTION ONLY. CHANGES MAY BE NECESSARY DUE TO LOCAL BUILDING REGULATIONS AND SITE CONDITIONS.  
1- THE PAD PERIMETER SHOULD BE AT LEAST 24" LARGER THAN THE BUILDING, BOTH IN LENGTH AND WIDTH.  
2- THE FOUNDATION SHOULD BE FORMED ON NATURAL UNDESTRUCTED SOIL CAPABLE OF SUBSTAINING 2,000 PSF.  
3- GRANULAR BASED GRAVEL OR CRUSHED STONE SHOULD BE COMPACTED TO A DEPTH OF 4". THE SLAB SHOULD CONSIST OF 8" THICK 2,000 PSI CONCRETE.  
4- FINISH SURFACE SHOULD BE LEVEL AND THEN INSTALL 3/4" X 4" ANCHOR BOLTS INTO THE TIE DOWNS ATTACHED TO THE BUILDING CORNERS.

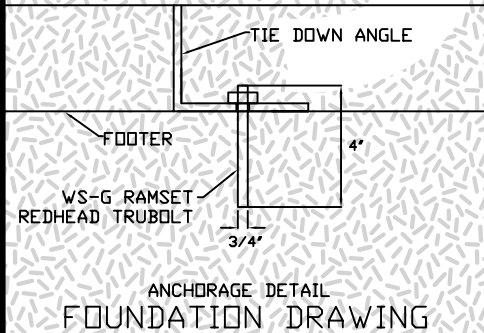
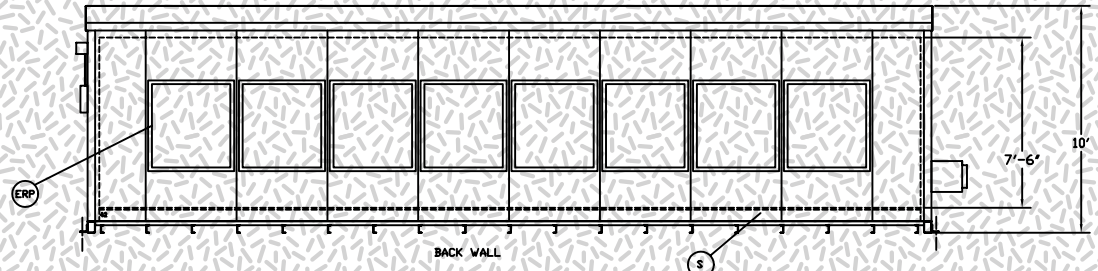
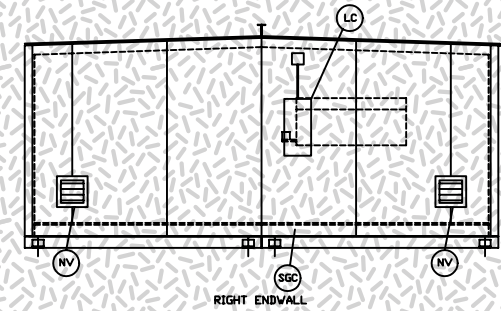
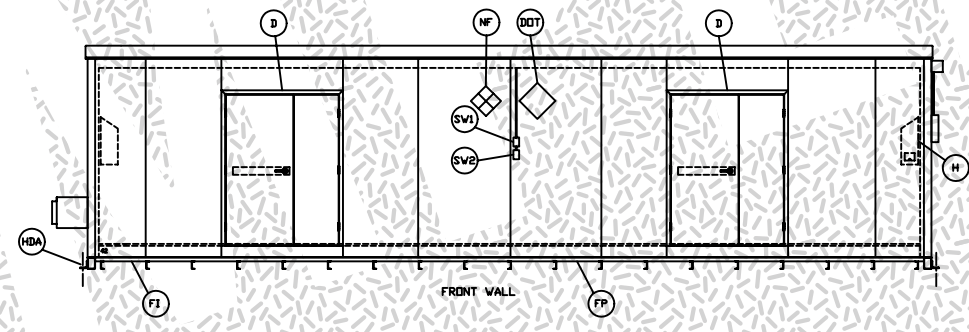
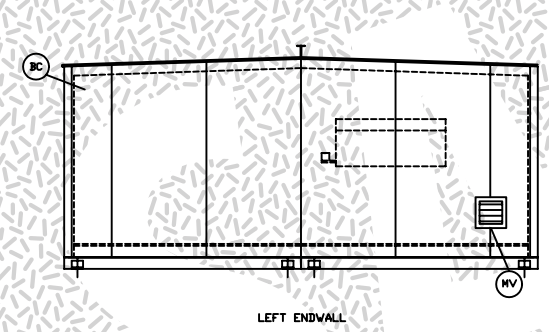
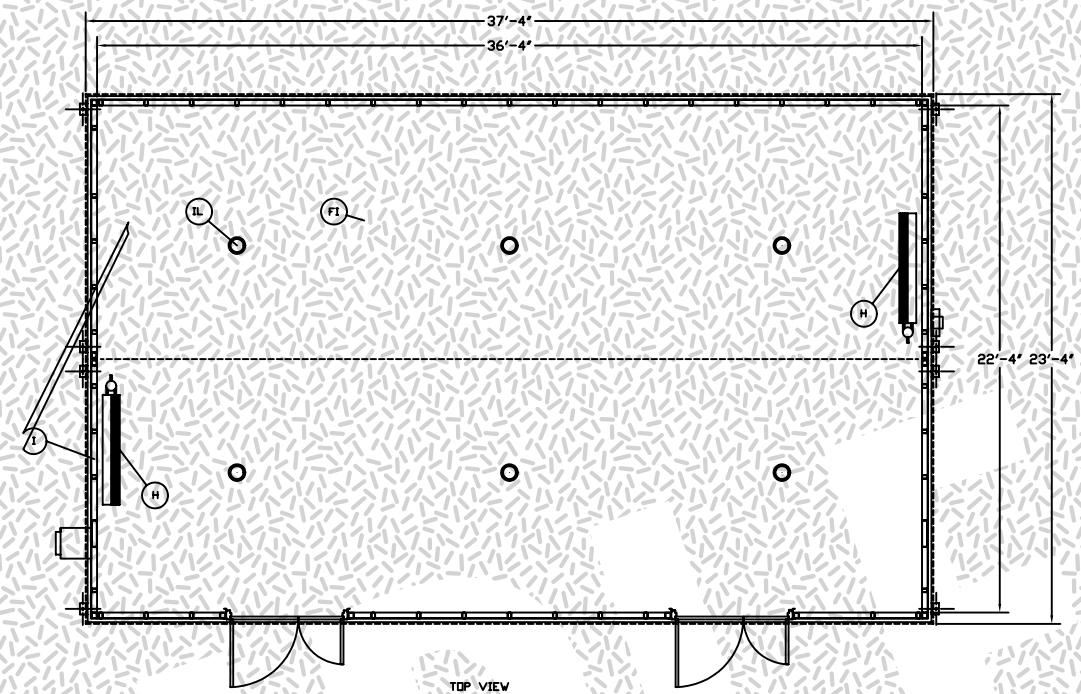
ALL DIMENSIONS SHOWN ON THIS PRINT ARE FOR YOUR REFERENCE. TOLERANCES ARE ±1" UNLESS OTHERWISE NOTED.

DATE:  
DRAWN BY:

LEGAL NOTE  
THIS DRAWING IS THE PROPERTY OF U.S. CHEMICAL STORAGE, LLC. ANY DUPLICATION OF THIS DRAWING IN WHOLE OR IN PART IS STRICTLY FORBIDDEN. ANYONE DOING SO WILL BE PROSECUTED UNDER THE FULL EXTENT OF THE LAW.

APPROVED BY: -  
CHECKED BY: -

- LEGEND**
- DOT- DEPARTMENT OF TRANSPORTATION FLIP CHART PLACARD
  - NF- NATIONAL FIRE PROTECTION ASSOCIATION 704 SIGN
  - BC- BUILDING COLOR-BLEACHED BONE-UNLESS SPECIFIED OTHERWISE
  - S- SUMP
  - FP- FORKLIFT POCKETS
  - SGC- STATIC GROUND CONNECTOR
  - HDA- HOLD DOWN ANGLE (8)
  - NV- NATURAL VENTILATION WITH RAIN LOUVRE
  - LL- NOT SHOWN, LOCATED ON ROOF OF BUILDING
  - I- INSULATION (R22) CEILING & WALLS
  - FI- FLOOR INSULATION (R12)
  - D- 60" DOUBLE DOOR NON FIRE RATED WITH PANIC HARDWARE (2)
  - LC- LOAD CENTER 208V 3 PHASE 60 HZ
  - IL- (EXPLOSION PROOF) INTERIOR LIGHTING (6)
  - SW1- (NON-EXPLOSION PROOF) INTERIOR LIGHT SWITCH (1)
  - MV- (EXPLOSION PROOF) MECHANICAL VENT (1)
  - SW2- (NON-EXPLOSION PROOF) MECHANICAL VENT SWITCH (1)
  - H- (EXPLOSION PROOF) CONVECTION HEATER 25,950 BTU (2)
  - ERP- EXPLOSION RELIEF PANELS (8)



U.S. CHEMICAL STORAGE®  
355 INDUSTRIAL PARK DRIVE  
BOONE, NC 28607  
PHONE: 1.800.233.1480  
FAX: 1.828.264.7926

ENGINEER'S SEAL